

“There is no one **like** you,  
there never will be.

Today is your masterpiece,  
so **grow** with courage...

**Become** all that you  
were created to be!”

**TheWholePerson**  
Baton Rouge

**Carole B. Montgomery, Director**  
In Partnership with The Arc Baton Rouge  
1984 Wooddale Boulevard  
Baton Rouge, Louisiana 70806  
(225)927-0855

WholePerson2014@aol.com



**TheWholePerson**  
Baton Rouge

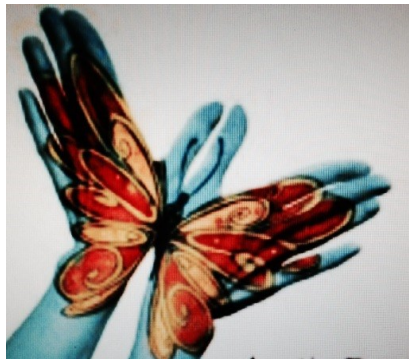
## The Gap Program

The Gap Program is designed to help hearing or deaf Individuals to obtain employment and lead more independent lives. The focus is on people with Asperger's Syndrome, individuals on the Autism spectrum, individuals with challenges in self-care and self-direction, as well as those in need of social skills development.



## Education to Application

This program is in partnership with the Louisiana Career Development Center for the Deaf and Blind. It helps deaf and deaf-blind individuals to fine tune their career goals before entering the job market. It also offers evaluation and) counseling in order to match skills with the proper placement. Education to Application is offered to deaf and deaf-blind high school graduates, college graduates and graduates from secondary programs. Term of this program is up to 3 months.



## Supported Employment

Supported Employment (SE) services is in partnership with The Arc Baton Rouge, and available to consumers with all disabilities. A job coach assists those who have been placed in a job but are not yet ready to work alone. They can take things slowly while getting the support and encouragement they need before being on their own.

